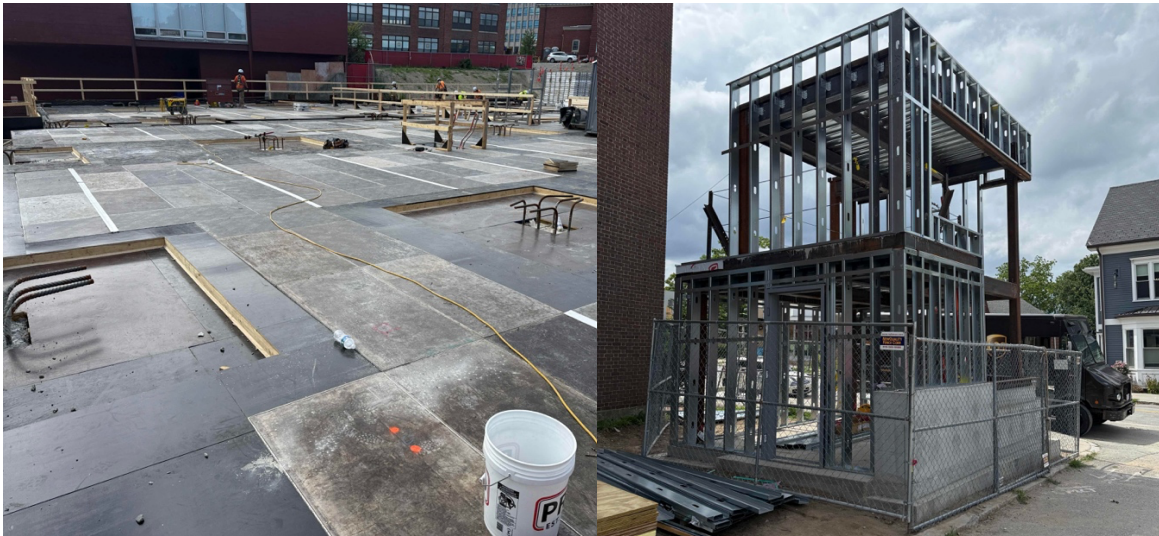


## PIERCE SCHOOL WEEKLY UPDATE, 07/18/25



**SCHOOL STREET WILL BE CLOSED FROM 7:00AM-4:30PM DAILY THROUGH LABOR DAY**

### THIS WEEK (July 14-18)

- Utility connections continued on School Street
- Form/Rebar/Pour footings, walls and columns
- Structural deck installation ongoing
- Temp electrical service completed
- Mock-up framing completed
- Excavation around Historic Building foundation.

### PROJECT TRACKING:

- Footings: 42%; walls: 42%; piers: 27%

### ANTICIPATING NEXT WEEK (July 21-25)

- In-road utility work on School/Harvard Streets
- F/R/P footings, high and low walls
- Begin rebar at structural deck
- Begin sheathing, roofing of mock-up
- Excavation around Historic Building

### MILESTONES:

- Complete concrete walls 'A' side: 07/17/25
- First structural deck concrete pour: 07/28/25

### Narrative:

Successful concrete pours on Tuesday and Thursday at footings, wall and columns. The structural deck formwork progressed well, keeping on target for a 7/23 delivery of rebar and the 7/28 concrete pour. The plumber was on site to review and locate deck sleeves. The site contractor continued with excavation, fill and compaction for the next areas of foundation work. A utility crew on School Street worked on sewer connections and the crew on Harvard Street completed the last cut and cap of utilities and completed a test pit for the design team.

At the Historic Building, excavation to expose the South side of the foundation began.

Power was shut off to Town Hall and the Library, allowing the full temporary power setup to be livened. This temporary service will support the construction operation until permanent power is available. There were no issues with the overnight shutdown and startup.

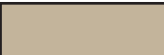


Overall, the project remains on schedule.

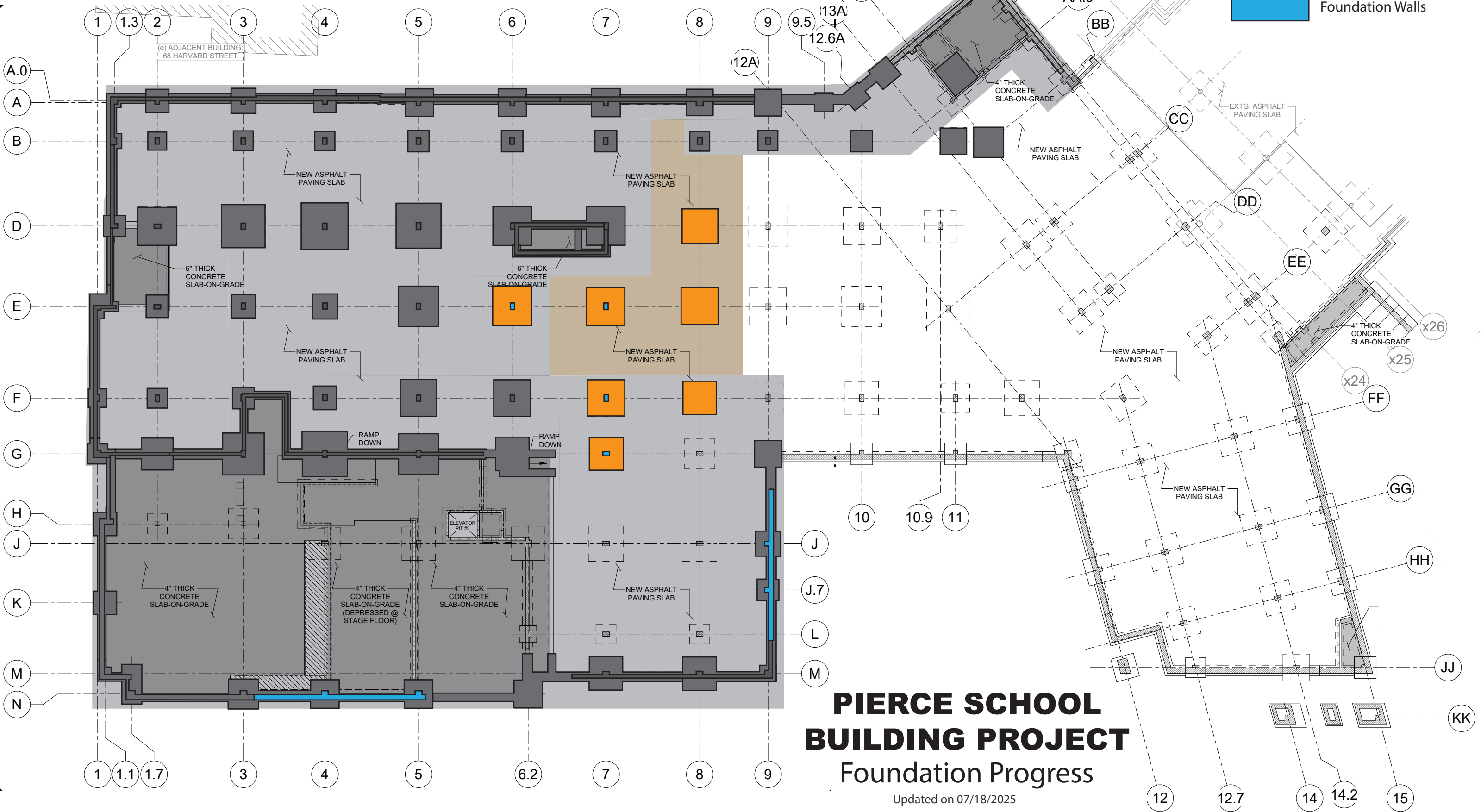
For other project details, please visit the Project Website: <https://www.brookline.k12.ma.us/Page/2463>

To sign up for Project Updates, please go to: <https://www.brooklinema.gov/list.aspx?ListID=816>



Bldg A | Bldg B

-  Footing/Site Prep
-  Footings
-  Foundation Walls



**PIERCE SCHOOL  
BUILDING PROJECT**  
Foundation Progress

Updated on 07/18/2025